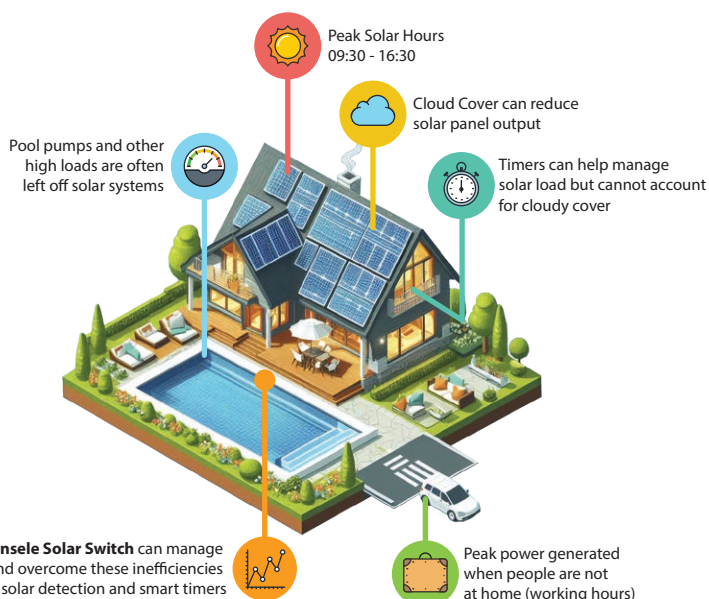




## Peak Solar Detection Switch for Improved Solar System Management

### MAXIMISE YOUR SOLAR SYSTEMS POTENTIAL

- ☀️ A lot of potential power is underutilised on an unmanaged solar installation.
- ☀️ The Insele Solar Switch in conjunction with a timer can assign loads to times during peak PV power, whilst monitoring solar availability.
- ☀️ The Insele Solar Switch can detect if there is sufficient solar power available and allow the assigned load to run based on the timer setting.
- ☀️ The Insele Solar Switch has been designed with an override timer that can allow the load to run for a preselected limited time on the Inverter power should the need arise



### EASY INSTALL, MINIMAL SETUP REQUIRED

The switch is designed to fit onto a standard DIN power rail in the DB board or a similar connection on a remote DB for the pool, pump control or appropriate fixing for standalone installations.

Operation is extremely simple and only requires that the switch and solar sensor are properly installed. The switch will then connect the Inverter/Solar power to the load unless there is inadequate solar energy. When the solar energy is low, the switch will then switch off the load if no alternate source is supplied. Once the solar energy is again adequate, then power is reconnected to the load.

The preset timer can be set to run for approx. 24, 30, 60 or 120 minutes and needs to be configured at installation for the activation time.

☀️ **By using the Insele Solar Switch one can optimise the energy available from their solar installation**

💰 **Optional loads can be use on PV power only, saving on electricity bills**

🔧 **Automated solar control for user convenience**

🏠 **The Solar Switch has multiple applications and can manage various types of loads**

## CONTACT US

☎️ +27 11 792 5322

🌐 [www.insele-solar.co.za](http://www.insele-solar.co.za)

✉️ [sales@insele-solar.co.za](mailto:sales@insele-solar.co.za)

📍 67 CR Swart Drive, (cnr Freda) Bromhof, Strijdompark, JHB